



GALEON 700 SKYDECK

PRICE: 3.260.000 € (VAT excl.)

			
22,20 m	5,23 m	106 h	3350 L

OVERVIEW

Yacht type	Motor Yacht
Builder	GALEON
Year	2024

DIMENSIONS

Length	21,95 m
Beam	4,20 m
Fuel/ Water	3350 l / 800 l

MAIN MACHINERY

Engines	2X MAN V8 1200 hp
Engine Hours	106 h

ACCOMODATION

Guests	14
Cabins	4
Toilets	3

EQUIPMENT

What you get with the Galeon 700 SKYDECK:

Large tender garage: Perfect for storing your tender or other water sports equipment.

Crew cabin with one bed: Provides your crew with a comfortable place to rest without compromising on space.

Spacious sofa on the aft deck: Ideal for social gatherings with friends and family.

Elegant saloon with U-shaped kitchen: Plenty of storage and the option to add two comfortable lounge chairs where you can sit and enjoy the view.

Master bedroom with a private entrance: Separate access to the mid-cabin, which also has its own bathroom.

With standard equipment based on model year 2024 and additional options:

Electrical Equipment

- * Shore Power Inlet
- * Inverter

Electronics

- * Depthsounder
- * Radar
- * Log-Speedometer
- * Repeater(s)
- * TV Set
- * Navigation Center
- * Plotter
- * Autopilot
- * Radio
- * Compass
- * GPS
- * Cockpit Speakers
- * VHF
- * Flat Screen TV
- * Wi-Fi
- * AIS

Interior Equipment

- * Seakeeper
- * Stern Thruster
- * Dishwasher
- * Bow Thruster
- * Washing Machine
- * Electric Bilge Pump
- * Oven
- * Manual Bilge Pump
- * Microwave Oven
- * Air Conditioning
- * Electric Head
- * Heating
- * Hot Water
- * Refrigerator
- * Fresh Water Maker
- * Deep Freezer
- * Sea Water Pump
- * Battery Charger

Exterior Equipment

- * Teak Cockpit
- * Cockpit Shower
- * Teak Sidedecks
- * Hydraulic Gangway
- * Cockpit Cushions
- * Cockpit Table
- * Swimming Ladder

Additional Extras:

- * Silver gray paint
- * Dark walnut interior
- * 5 Raymarine plotters
- * Yacht Control Remote
- * Jet ski garage with rails and winch
- * Washing machine
- * Tumble dryer
- * 7 Raymarine cameras
- * Watermaker
- * TV in saloon and master bedroom
- * Seakeeper
- * Fusion sound system
- * Humphree trim tab system
- * Searchlight
- * Electric anchor
- * Stainless steel Lewmar with stainless steel chain
- * Windshield protection
- * Hydraulic HI-LO swim platform (700 kg)
- * Tropical Air Conditioning
- * Onan Cummins generator 22.5 kW
- * Hydraulic bow and stern thruster with variable speed
- * Webasto heating system
- * Extra large refrigerator in saloon + wine cooler
- * Dishwasher
- * Mosaic in bathrooms
- * Wood flooring
- * LED lighting throughout the yacht
- * Ice maker

















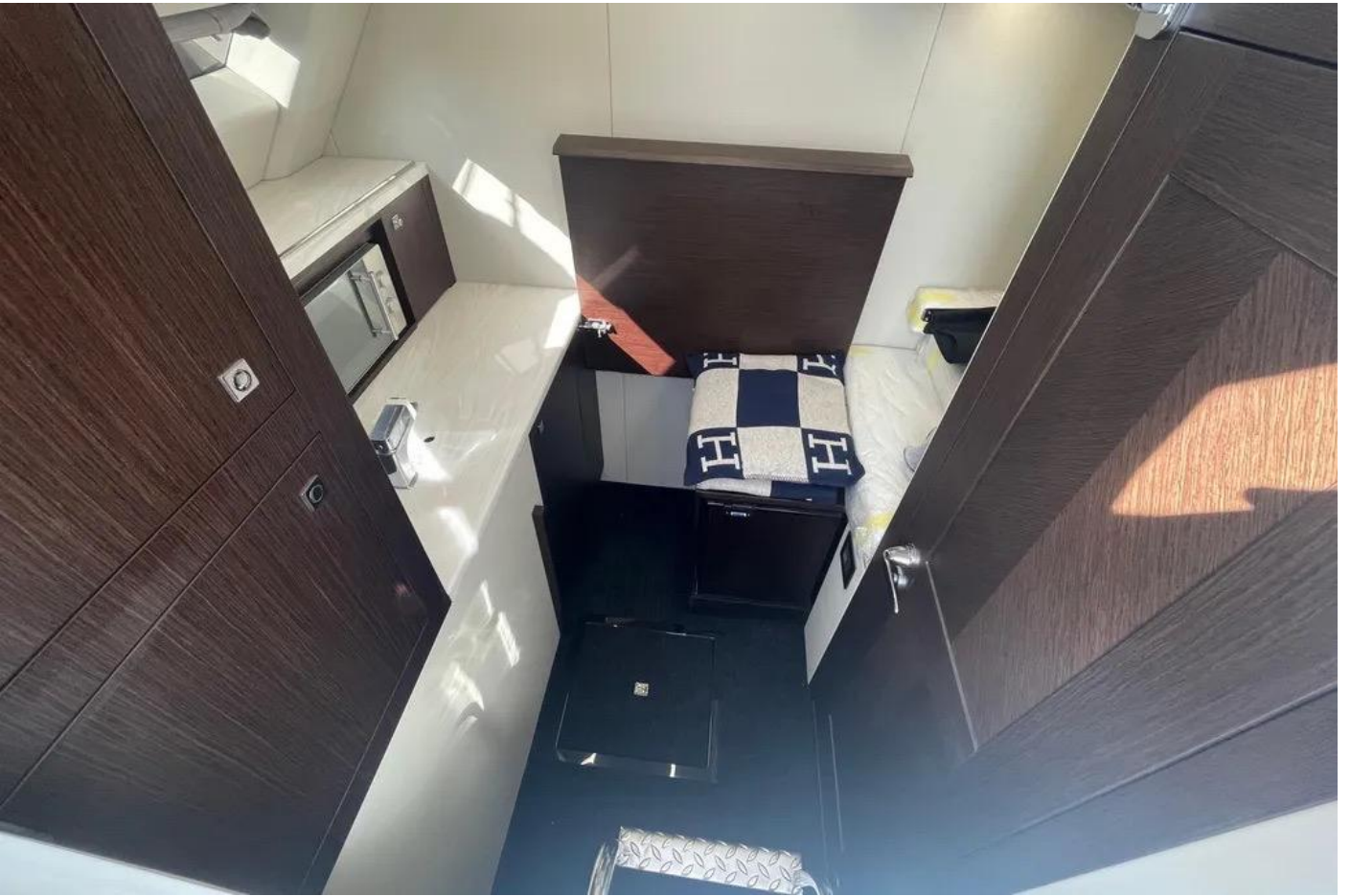






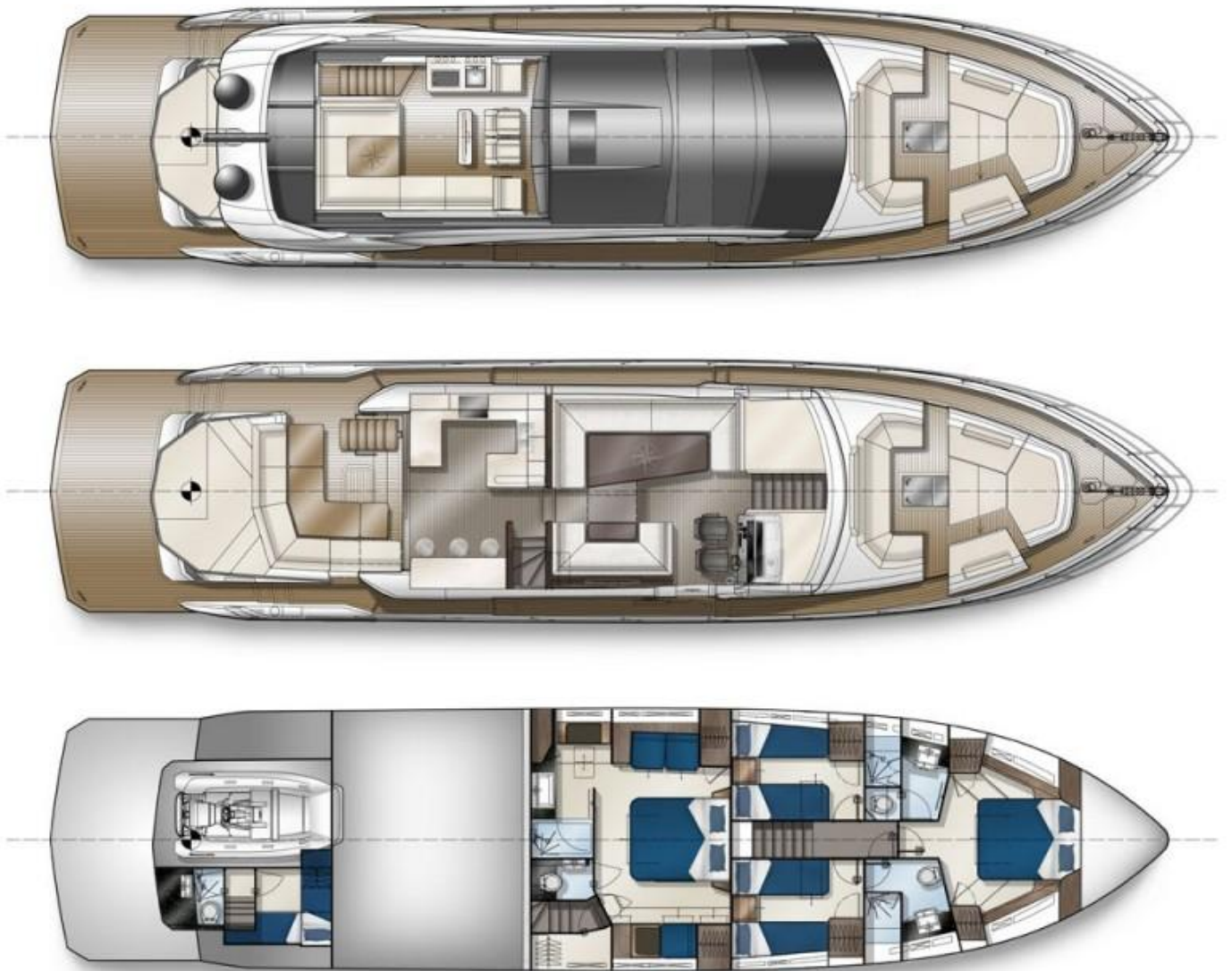








LAYOUTS



This document is not contractual. The Company is not responsible for the accuracy of information provided by the yacht owner (images, technical specification, list of installed equipment, engine hours, questions of legal registration). Any information provided by the Company on their website, brochure and any other related documentation is provided in good faith and offered for information purposed only. The exact parameters and characteristics could be provided on request, as well as indicated in the Sales Contract.