



# GALEON 560 FLY

PRICE: 1.590.000 € / VAT excl.

			
17,55 m	4,82 m	125 h	2200 L

Boat delivered in 2024, perfect condition. Only 125 engine hours, hydraulic platform and gangway. Foldable balconies. With a Skipper cabin.

## OVERVIEW

Yacht type	Motor Yacht
Builder	Galeon
Year	2024

## MAIN MACHINERY

Engines	2 X Volvo Penta D13 - 900 hp
Engine Hours	125 h

## DIMENSIONS

Length	17,55 m
Beam	4,82 m
Fuel/ Water	2200 l / 750l

## ACCOMODATION

Guests	12
Cabins	3 + 1
Toilets	2 + 1



## OVERVIEW

The Galeon 560 FLY is a 2024 luxury motor yacht delivered in perfect condition, featuring only 125 engine hours. Powered by 2× Volvo Penta D13-900 hp engines, it provides excellent performance, efficiency, and reliability. With a length of 17,55 m and a beam of 4,82 m, the yacht offers an exceptionally spacious layout, complemented by Galeon's signature innovations such as foldable balconies (Beach Mode) and a hydraulic platform ideal for tenders or water toys. Tender is not included.

The yacht accommodates up to 12 guests, configured with 3 cabins + skipper cabin, and 2 + 1 bathrooms. High-end interior materials, natural light, and intelligent space-planning make the saloon and cabins feel open and comfortable.

Fully equipped for premium cruising, it includes a chilled-water air-conditioning system, generator, bow and stern thrusters, Raymarine navigation package with multiple Axiom displays, YachtController, and an extensive set of covers, lighting upgrades, and comfort features. The yacht also features a hydraulic gangway, tender holders, aft mooring winches, flybridge hardtop and Permateek deck.

With its combination of luxury, technology, and functionality, this Galeon 560 FLY presents an excellent opportunity to acquire one of Galeon's most sought-after models, ready for the season, fully equipped, and in near-new condition.

# EQUIPMENT

- ENGINES VOLVO PENTA 2 X D13-900 WITH DIGITAL 7" DISPLAY
- MODIFIED LATI GREY - MATT PAINT
- BEACH MODE PACKAGE:
  - FOLDABLE AFT BALCONIES AND SLIDING OPENABLE AFT SIDE WINDOWS, CONVERTIBLE BAR AREA IN SIDE COCKPIT
- SKIPPER AFT CABIN
- CHAIN COUNTER (MAIN STATION)
- CHAIN COUNTER REPEATER
- HYDRAULIC BATHPLATFORM - 500KG LIFTING CAPACITY
- TENDER HOLDERS INTEGRATED IN BATHPLATFORM
- BOWTHRUSTER WITH JOYSTICK
- STERN THRUSTER WITH JOYSTICK
- AIR CONDITIONING SYSTEM - CHILLED WATER WITH HEATING INVERTER
- GENERATOR FISCHER PANDA 15000x (constants rpm model)
- REFRIGERATOR 320l
- DISH WASHER IN GALLEY
- ENTRANCE DOOR BLACK PLISSES
- AMBIENT LED LIGHTNING IN MASTER AND BOW CABIN
- SEARCHLIGHT ON BOW
- FIBERGLASS TABLE IN AFT COCKPIT
- LED LIGHTS (COCKPIT, STEPS, FLYBRIDGE)
- HYDRAULIC PASARELLE (BOX SYSTEM)
- AFT MOORING WINCHES
- COCKPIT COVER
- COVER FOR FLYBRIDGE STEERING CONSOLE
- COVER FOR SOFA ON FLYBRIDGE AT THE STEERING CONSOLE
- COVER FOR FLYBRIDGE SOFA ON THE PORTSIDE
- COVER FOR SUNDECK ON THE BOW
- COVERS FOR FRONT WINDOW AND SIDE WINDOWS
- ANTI FOULING (BLACK)
- RAYMARINE CHARTPLOTTER/FF 1X AXIOM 12+ RV-EU, 1X AXIOM 12+ WITH TRANSDUCER B744V AND DIGITAL RADAR RD424 HD
- ADDITIONAL RAYMARINE CHARTPLOTTER 1X AXIOM 12+ ON MAIN/FLY STATION
- ADDITIONAL RAYMARINE CHARTPLOTTER 1X AXIOM 12 PRO-S WITH INTEGRATED HIGH CHIRP SONAR FOR CPT-S ON MAIN/FLY STATION
- RAYMARINE VHF RAY91, AIS AND VHF ANTENNA (WITH REPEATER ON FLY)
- RAYMARINE AUTOPILOT EVOLUTION DBW WITH 2xP70RS CONTROL HEAD, EV2 SENSOR CORE, EV2 CABLING KIT
- ELECTRIC SLIDING TV LED 50" IN SALOON WITH BLURAY
- TV LED 50" IN MASTER CABIN
- INVERTER 230V/3kW
- HIGHLIGHTED SHELVES IN MASTER CABIN
- 2X BLACK RADAR DOMES ON FLYBRIDGE
- COVER FOR FLYBRIDGE SUNDECK
- YACHTCONTROLLER
- 2x WATER INLET WITH FRESH WATER FOR WASH DOWN WILLIAMS

- WATER HEATER (80L)
- TRIM TABS INSTALLATION WITH INDICATORS
- AFT DECK STORAGE WITH TRANSOM ENTRANCE
- HELMSMAN'S SIDE DOORS
- THREE SEGMENT FOLDED ALUMINIUM ENTRANCE DOORS
- LAMINATED HARDTOP ON FLYBRIDGE WITH WHITE SOLID ROOF
- FRONT WINDOWS DEFROSTER
- BOW ANCHOR WINCH
- GALVANIZED ANCHOR AND CHAIN
- HYDRAULIC STEERING
- COMPLETE WASTE SYSTEM WITH ELECTRIC PUMPS
- OVEN COMBO (GRILL+ MICROWAVE FUNCTION)
- SHOWER IN BATHROOM
- KERLITE FLOOR IN THE TOILETS
- FORMICA BATHROOM WALLS (EACH)
- BLACK MANUAL PLISSE IN SALOON
- CURTAINS IN CABINS
- ARTIFICIAL WOOD FLOOR IN GALLEY
- LED CEILING LIGHTS ON WHOLE BOAT
- HIGHLIGHTING UNDER BEDS IN MASTER AND BOW CABIN
- HIGHLIGHTING UNDER GALLEY AREA FURNITURE
- REFRIGERATOR ON FLYBRIDGE (49L)
- FIBERGLASS FOLDABLE TABLE ON FLYBRIDGE
- PERMATEEK ON BATHPLATFORM
- PERMATEEK ON COCKPIT DECK AND BALCONIES + PERMATEEK ON SIDE DECKS
- PERMATEEK STEPS TO FLYBRIDGE
- SHOWER ON BATHPLATFORM
- FIXED SOFA WITH SUN DECK ON BOW DECK
- FRONT WINDOWS WASHING SYSTEM
- SALTWATER ANODES
- IMIS (Integrated Management and Information System)
- BATTERY CHARGER
- RUDDER INDICATOR
- FUSION RADIO IN SALOON(USB) (2 SPEAKERS) AND RADIO ON FLY
- 2 SPEAKERS

Tender is not included.













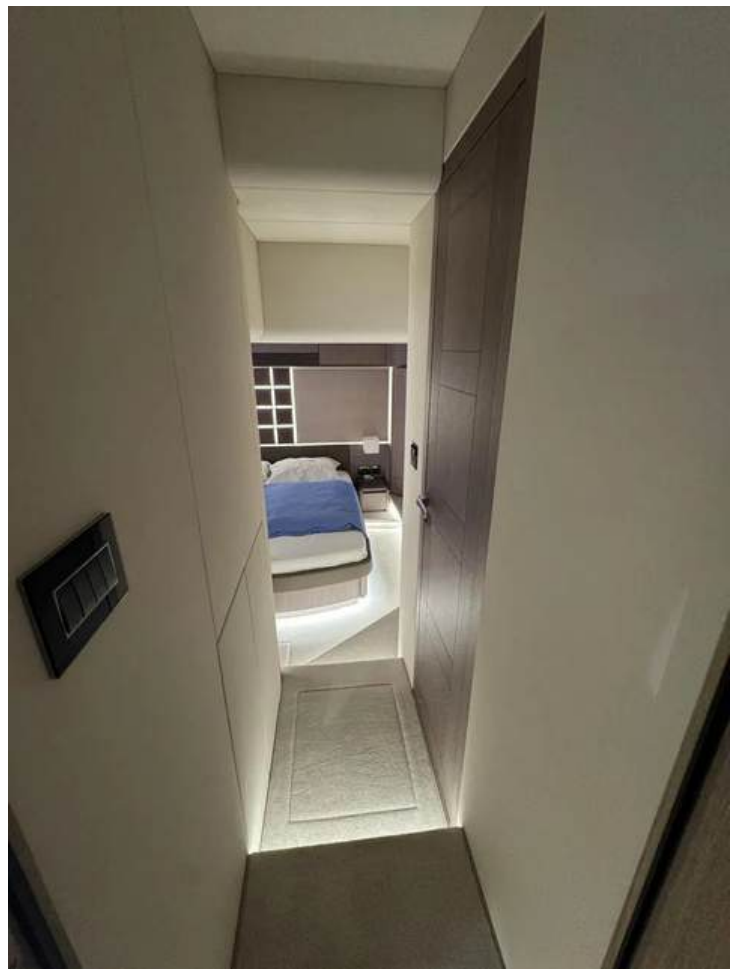
























# LAYOUTS

