



GALEON 410 HTS

PRICE: 749.000 / VAT incl.

			
12,48 m	3,95 m	20 h	1000 L

The 410 HTC is agile and confidently brings you endless waterborne adventures. Guests will surely enjoy the large glass sunroof over the helm station which can be opened in a matter of seconds. Step on board to discover what makes this model so special.

OVERVIEW

Yacht type	Motor Yacht
Builder	Galeon
Year	2024

DIMENSIONS

Lenght	12,48 m
Beam	3,95 m
Fuel/ Water	1000 l / 450 l

MAIN MACHINERY

Engines	VOLVO PENTA 2 X D4-300
	DPI
Engine Hours	20 h

ACCOMODATION

Guests	12
Cabins	2
Toilets	2



OVERVIEW

Galeon 410 HTC is the latest model from the Gdańsk shipyard, which entered mass production at the turn of the New Year. This model is another hard top build, based on the very popular model 400 FLY, liked by customers. All proven and award-winning solutions, such as opening balconies, have been implemented here. This unit is distinguished from the model 400 FLY by a more sporty and dynamic silhouette of the hull. The panoramic glass and electric sunroof enhances the feeling of freedom and contact with nature. We enter the above-mentioned living room through four sectional, folding doors. From the threshold, the interior surprises you with the design of furniture with visible roundings and solid wood inlays, showing the craftsmanship, accuracy and skills of shipyard carpenters. Here we find a lot of thoughtful solutions such as cabinets, lockers or, among others, a hidden electric pull-out TV. On the starboard side there is a main place to rest with a dining table, a large U-shaped sofa and a convertible sofa, which can be easily and quickly moved to the cockpit, thus enlarging and integrating the lounge space with the external cockpit.

410 HTC is one of the smallest models on the market with the master cabin located at the stern. A large full-sized bed in the middle, a large number of cabinets, lockers, a sofa or a make-up corner, LCD TV are just some of the equipment options. The whole interior is decorated with a beautifully illuminated stylish head above the bed. Here, too, you can see bent elements of decorative wooden panels and semi-circular finishes. The VIP cabin at the bow has an option of a sliding bed, which makes it possible to create separate berths on the sides. The interior of the Galeon 410 HTC is illuminated by multiple points. Thanks to perfectly integrated ceiling ambient and built-in LEDs, all rooms are perfectly lit.

EQUIPMENT

MOTORISATION

- * VOLVO PENTA 2 X D4-300 DPI WITH DIGITAL 7" SCREEN

VOLVO ENGINE ACCESSORIES

- * INTERFACE NMEA2000/EASY CONNECT

INTERIOR DESIGN

- * AMERICAN DARK WALNUT INTERIOR MATT LACQUERED

LAYOUT

- * WET BAR PACKAGE - GRILL ON BATHING PLATFORM WITH HOT/COLD WATER SINK, CHOPPING BOARD, WASTE BIN, STORAGE SPACE
- * FRONT CABIN WITH CONVERTIBLE BED

MAIN EQUIPMENT

- * H+B HYDRAULIC BATHING PLATFORM 900MM
- * BOW THRUSTER WITH JOYSTICK
- * STERN THRUSTER WITH INTEGRATED JOYSTICK
- * KLIMAANLAGEN-SYSTEM (32000 BTU)
- * GENERATOR PAGURO 9000

INTERIOR FITTINGS

- * SOFT CURTAIN IN FRONT OF THE SALOON DOOR
- * RAFFROLLOS IN THE CABINS
- * AMBIENTE LED LIGHTS (KITCHEN, SALON, CABINS)
- * ARTIFICIAL WOODEN FLOOR IN THE SALON AND KITCHEN
- * MOSCITO NETS

EXTERIOR FITTINGS

- * LED LIGHTS IN COCKPIT, STEPS, BATHING PLATFORM, FLYBRIDGE
- * SUN CUSHIONS ON THE FOREDECK
- * MANUAL SUN SHADE WITH S/S SUPPORT ON BOW DECK
- * WINDSCREEN COVER
- * ANTIFOULING (SCHWARZ)

ELECTRONIC EQUIPMENT

- * RAYMARINE KARTENPLOTTER/FF 1 X AXIOM 12 RV-EU MIT TRANSDUCER B60
- * TV-32 LED FLAT SCREEN IN THE SALON, ELECTRICALLY RETRACTABLE
- * INVERTER 230V/3kW + ADDITIONAL AGM BATTERIES

Retrofitting

- * Conversion to the Bodensee licence
- * W-LAN antenna
- * 220 V sockets and 9 x USB sockets
- * Deck washing system in the stern area
- * Deck wash system in the bow area
- * 220 V shore power connection in the anchor locker
- * Bowsprit
- * Stainless steel anchor Delta polished 20 kg
- * 75 m stainless steel chain 8 mm ISO/DIN
- * Rear canopy with piping rail
- * Tarpaulin over sunroof, windscreen and front upholstery
- * Table and cushion cover in the cockpit
- * 2x2 fender baskets
- * Autopilot
- * SAT TV + Dummy



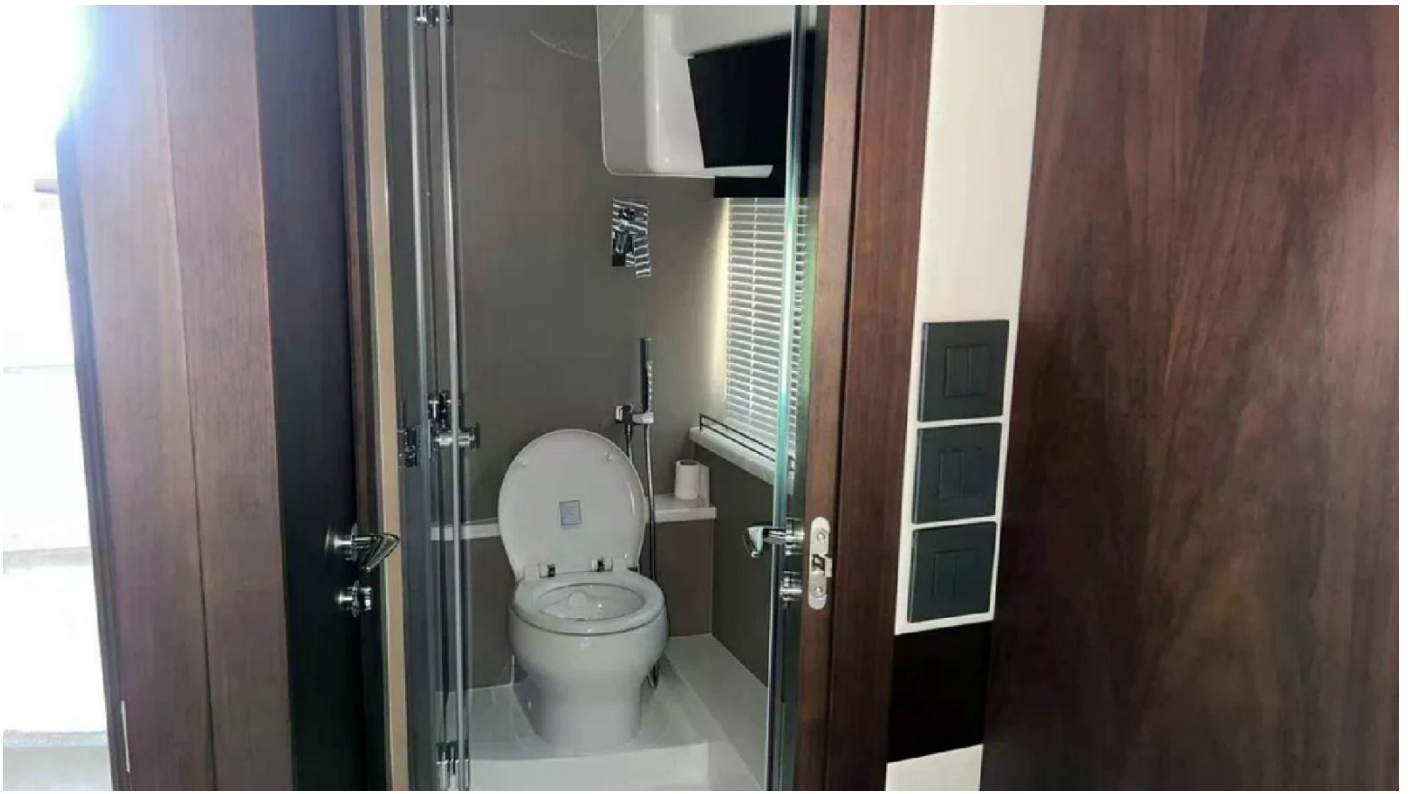








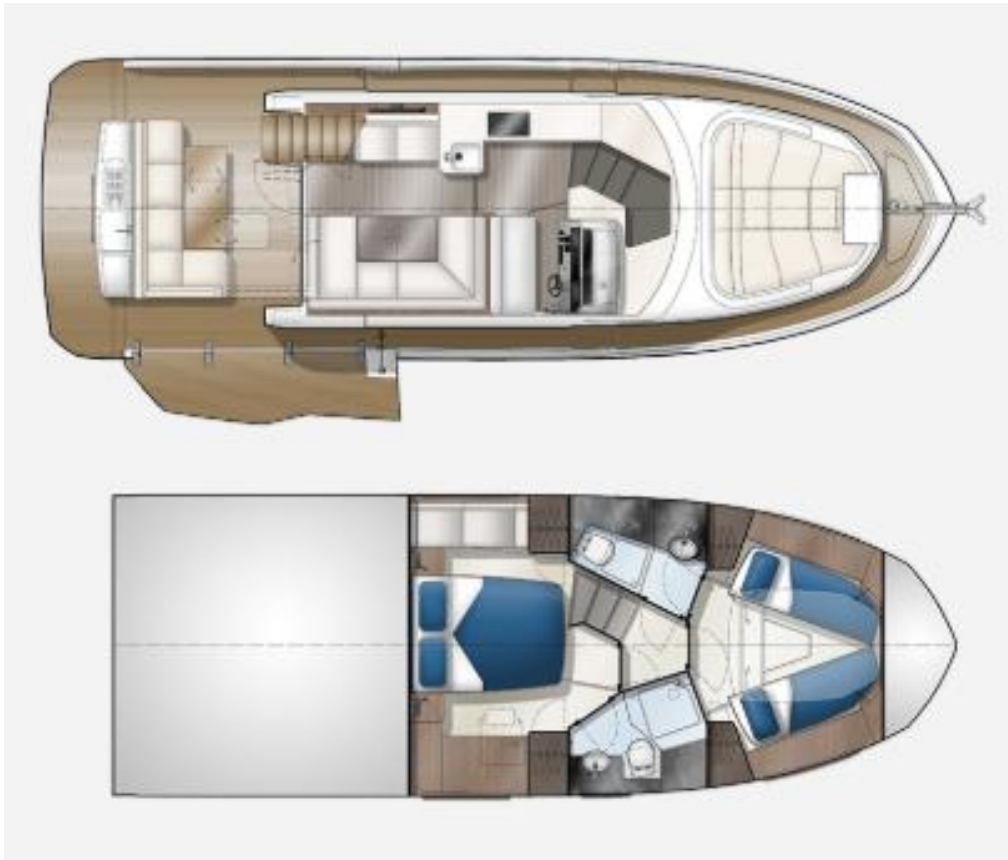








LAYOUTS



This document is not contractual. The Company is not responsible for the accuracy of information provided by the yacht owner (images, technical specification, list of installed equipment, engine hours, questions of legal registration). Any information provided by the Company on their website, brochure and any other related documentation is provided in good faith and offered for information purposed only. The exact parameters and characteristics could be provided on request, as well as indicated in the Sales Contract.